

JVC

SERVICE MANUAL

STEREO HEADPHONES

HA-NC250-J, HA-NC250-C, HA-NC250-E



SPECIFICATION

Frequency response	8 Hz - 24,000 Hz(Power-ON)
Noise reduction	More than 16.5 dB at 150 Hz
Sensitivity	102 dB/1 mW (power - ON) 100 dB/1 mW (power - OFF)
Input impedance	40 Ω (power - ON), 96 Ω (power - OFF)
Driver unit	\varnothing 40 mm
Power supply	AAA battery (DC 1.5 V) x 1
Battery life	Approx. 20 hours* (using Manganese AAA battery) Approx. 50 hours* (using Alkaline AAA battery) * Varies depending on operating conditions. * Without ambient noise.
Cord length**	1.2 m (3.9 ft) (detachable)
Mass	150 g (5.30 oz) (incl. battery) 140 g (4.94 oz) (excl. battery)
Accessories	Carrying case x 1, Manganese AAA battery (R03) x 1, Cord x 1 (1.2 m \varnothing 3.5 Stereo plug \leftrightarrow \varnothing 3.5 Stereo plug, Dual plug adapter (for in-flight use) x 1, Stereo phone plug adapter 6.3 mm (1/4 inch) x 1

Designs and specifications are subject to change without notice.

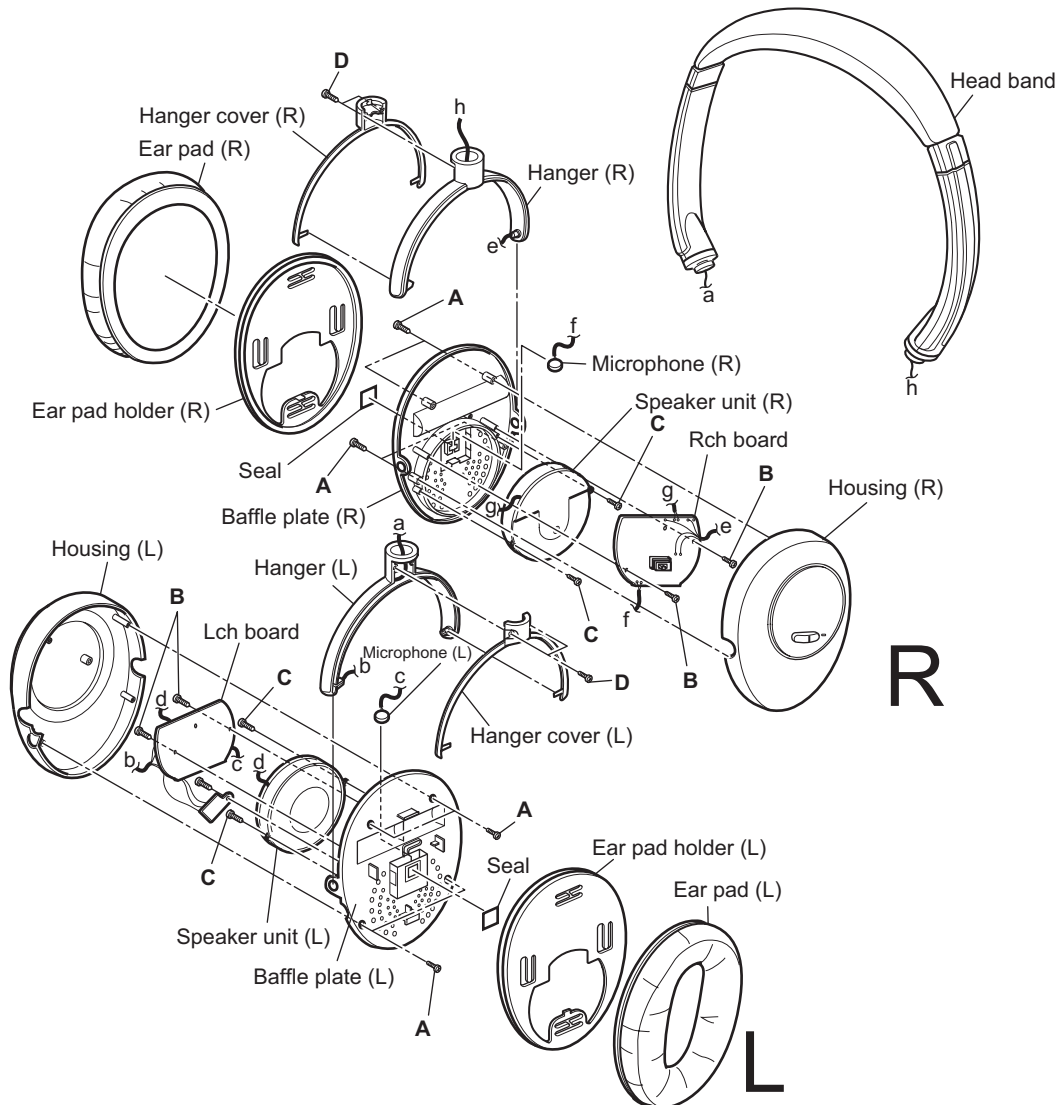
SECTION 1 PRECAUTION

This service manual does not describe PRECAUTION.

SECTION 2 SPECIFIC SERVICE INSTRUCTIONS

This service manual does not describe SPECIFIC SERVICE INSTRUCTIONS.

SECTION 3 DISASSEMBLY



3.1 Removing the housings(L)/(R)

- (1) Remove the ear pads(L)/(R) and ear pad holders(L)/(R).
* When attaching the ear pad holders, be careful as the left and right parts are different.
- (2) Remove the eight screws **A** attaching the housings(L)/(R).

3.2 Removing the Lch board / Rch board

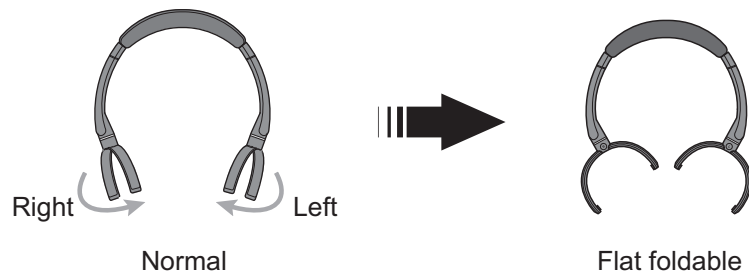
- * Remove the housings(L)/(R).
- (1) Remove the four screws **B** attaching the Lch board / Rch board.
- (2) Unsolder the wires connected to each board, and then remove each wire.
* When soldering the wires, be careful with the polarity of the wires. (Refer to the wiring diagram)

3.3 Removing the microphones(L)/(R)

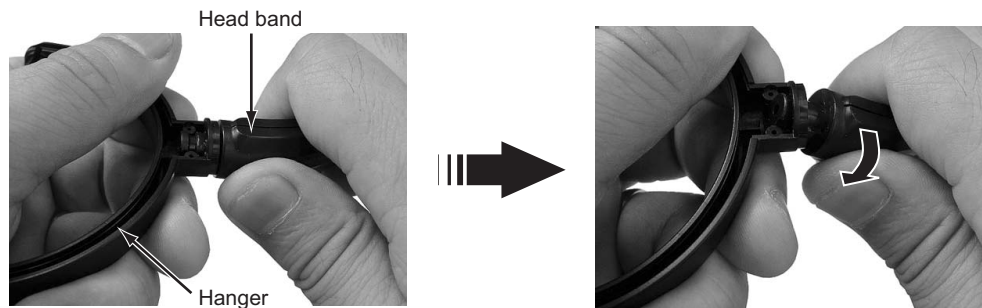
- Remove the housings(L)/(R) and the Lch board / Rch board.
- (1) Remove the four screws **C** attaching the speaker units(L)/(R), and then remove the speaker units(L)/(R).
- (2) Peel off the seal from the baffle plates(L)/(R), and then remove the microphones(L)/(R).

3.4 Removing the hangers(L)/(R)

- Remove the housings(L)/(R).
- Unsolder the wires connecting from the head band to each board.
- (1) Remove the four screws **D** attaching the hanger covers(L)/(R), and then remove the hanger covers(L)/(R).
- (2) Rotate the hanger 90 degrees. (It become the state of "Flat foldable" as shown in the figure below.)



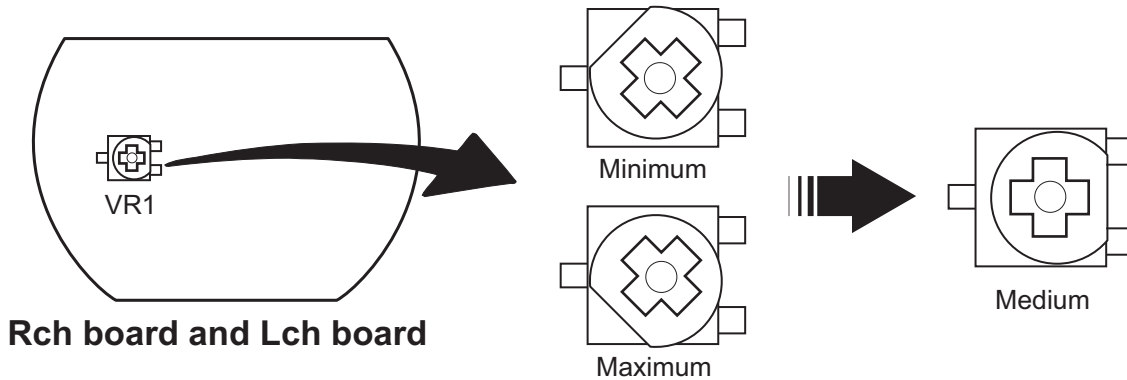
- (3) The hanger can be removed by folding and pressing the hanger and head band as shown in the picture.
- (4) When attaching, perform the reverse procedure.



SECTION 4 ADJUSTMENT

4.1 Adjustment of volume

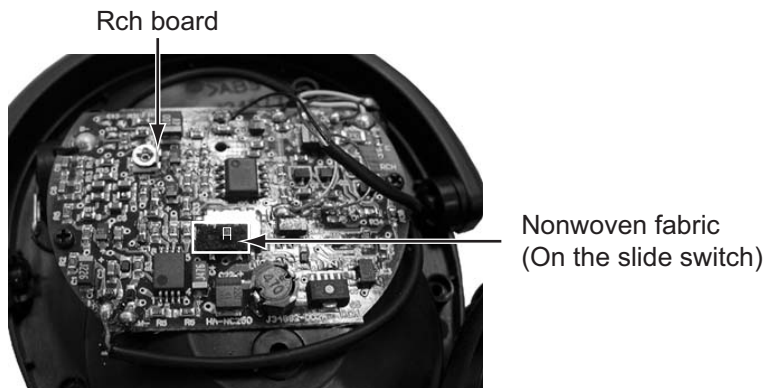
- (1) When replacing the "Lch board" or "Rch board", first, check if VR1 is in the "Medium" position as shown in the figure below.
- (2) If VR1 is not in the "Medium" position, adjust it to "Medium".



SECTION 5 TROUBLESHOOTING

5.1 Assembly precautions of power switch knob

When replacing the power switch knob, place the nonwoven fabric provided with the power switch knob over the slide switch on the Rch board as shown in the picture, and then attach the housing.



JVC

Victor company of Japan, Limited
ACCESSORIES CATEGORY 1644, Shimotsuruma, Yamato, Kanagawa 242-8514, Japan

(No.XC063)